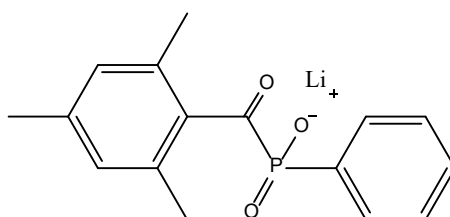


Lithium phenyl-2,4,6-trimethylbenzoyl phosphinate

Known as: LAP

Structural Formula



Characterisation	Specifications	Analysis
Appearance	White powder	Complies
Moisture (%)	Max 2.0	0.57%
Solubility (w/v)	Clear solution at 8.5%	Complies
^1H & ^{13}C -NMR in D_2O	Characteristic	Complies
UV-Vis	λ_{max} at 371nm	Complies
HPLC purity	$\geq 95\%$	98.7%

Catalyst Characteristics

- White powder
- Water soluble (up to 8.5 wt.%)
- Good cytocompatibility
- increased polymerization rates with 405 nm light
- Type I photo-initiator
- Improved performance at lower concentrations